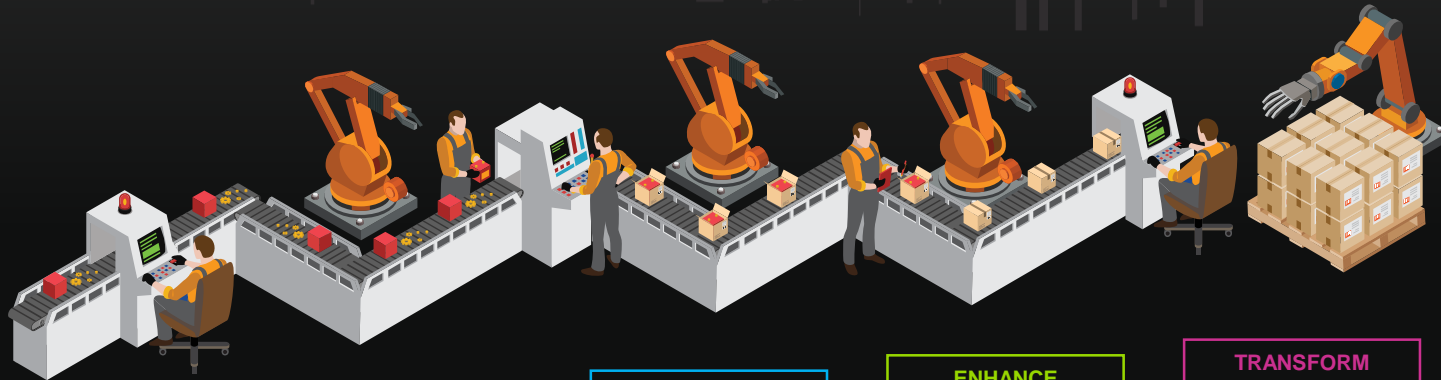


NETSUITE MANUFACTURING



REMEDiate

- Reduced time to close books 75-90%
- Improved staffing utilization due to automation 10-25%
- Improved order processing efficiency 45-75%

EXPAND

- Improved production efficiency and lead times 50-80%
- Reduced obsolete inventory carrying cost 60-80%
- Improved fulfillment rates and reduced back orders 75-85%

INNOVATE

- Increased average proposal volume 36-49%
- Reduced planning cycle times 20-30%
- Improved customer service capacity 25-60%

ENHANCE

- Reduced equipment cost and maximized throughput efficiency 30-40%
- Improved distribution cost as a % of sales 15-30%
- Reduced inventory cost 20-30%

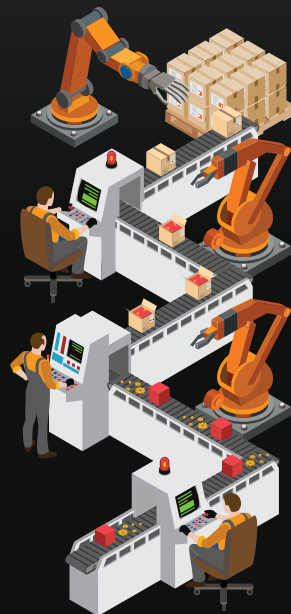
TRANSFORM

- Increased average deal size 78-105%
- Improved customer satisfaction 50-75%
- Remove monitoring enables anything-as-a-service

NETSUITE MANUFACTURING



www.concentrus.com



CUSTOMER REALIZED BENEFITS

SOLUTION

TRANSFORM

- Increased average deal size 78%-105%
- Improved Customer Satisfaction 50%-75%
- Remote monitoring enables anything-as-a-service

- Market Intelligence
- Marketing Automation
- Industrial Internet of Things

Market
Disruptor

ENHANCE

- Reduced equipment costs and Maximized throughput and efficiency 30%-40%
- Improved Distribution Cost as a % of sales 15%-30%
- Reduced Inventory Costs 20%-30%

- Warehouse Management (WMS)
- Advanced Order Management
- Maintenance

Intelligent
Distribution

INNOVATE

- Increased average proposal volume 36%-49%
- Reduced in planning cycle times 20%-30%
- Improved Customer Service Capacity 25%-60%

- CPQ
- PLM
- Quality
- Paperless Manufacturing

Quality and
Process
Improvement

EXPAND

- Improved production efficiency and lead times 50%-80%
- Reduced obsolete inventory carrying costs 60%-80%
- Improved fulfillment rates and reduced back orders 75%-85%

- Scheduling
- Global Expansion
- B2C and B2B Commerce (B2X)
- WIP and Routing
- Asset Management
- Rough Cut Capacity Planning
- Shop Floor Reporting

Production
Efficiency

REMEDiate

- Reduced time to close books 75%-90%
- Improved staffing utilization due to automation 10%-25%
- Improved Order Processing Efficiency 45%-75%

- Financial (FMS)
- Order Management
- Inventory
- CRM
- Operational BI
- Work Orders and Assemblies
- Demand/Supply Planning

Operational
Efficiencies